

FLOOR STANDING BOILERS



RX E
RX CE IONO
(non electric) RX TP



A reliable safe choice

RX is a complete range of high-performance floor standing boilers with a stainless steel multi-gas atmospheric burner and cast iron exchanger, which are ideal for heating small and medium sized homes. The special care paid to details means that RX is a combination of modern and elegant design with extremely easy installation and servicing.

RX is available with output from 22 to 60.7 kW for the open chamber. The range includes:

- RX E: electronic version with integrated weather compensation

- RX CE IONO: automatic ignition with flame ionisation control; on the PVA version, the expansion tank, pump and safety valve are all fitted standard.
- RX TP: thermopile version, for installation in the absence of electric power, for industrial applications and not for central heating and D.H.W. production.

RX boilers can be installed in traditional plants or zone plants. For this type of installation, there is a hydraulic kit complete with accessories and an electronic control unit that can control up to three zones.



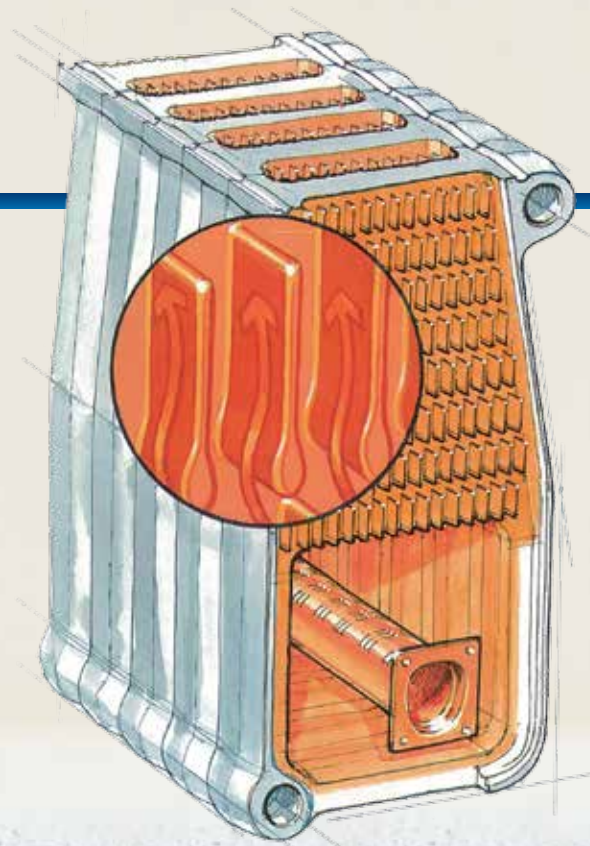
RX E



RX CE IONO - RX TP

A cast-iron soul

Cast iron is an alloy whose properties remain unaltered throughout time and means reliability, long life and ease of maintenance. The particular shape of the cast-iron heat exchanger leads to a perfectly balanced combustion with very low gas exhaust emissions. These are the most remarkable results that have been achieved by Sime through more than thirty years of experience.

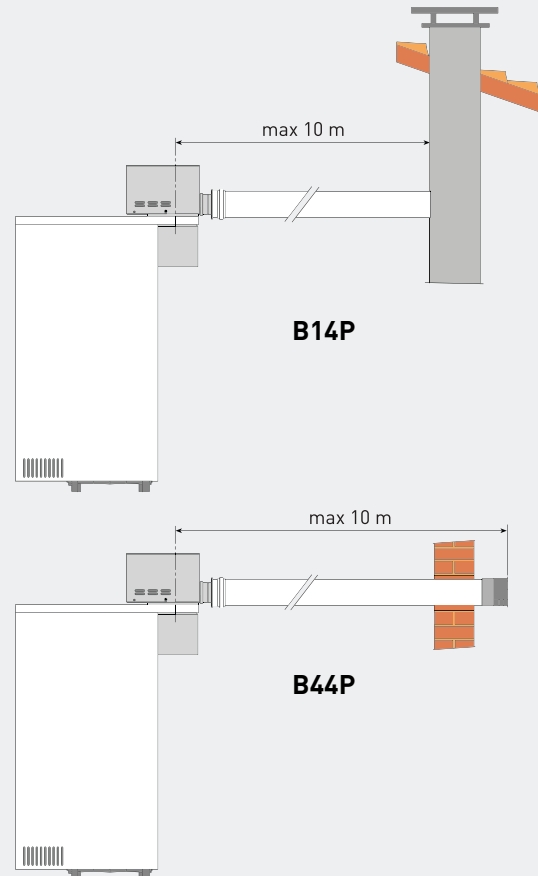


Smokes extractor kit

In case of poor chimney draft kits to aspire smokes from the combustion chamber are available for facilitating the expulsion. With the application of the smokes extractor varies the type of discharge.

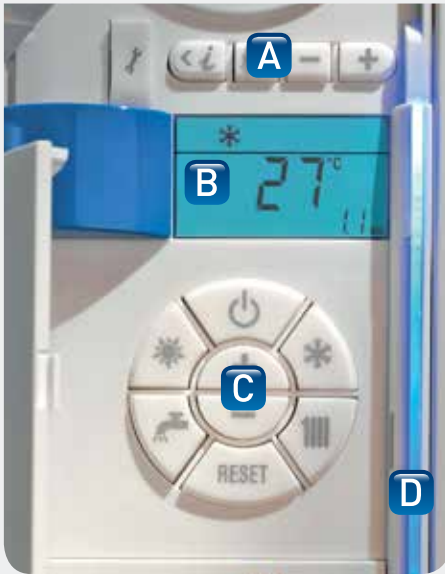
CODE

- 8098870** Smokes extractor kit for RX 19
- 8098871** Smokes extractor kit for RX 26
- 8098872** Smokes extractor kit for RX 37-48



RX E

Modern and practical interface



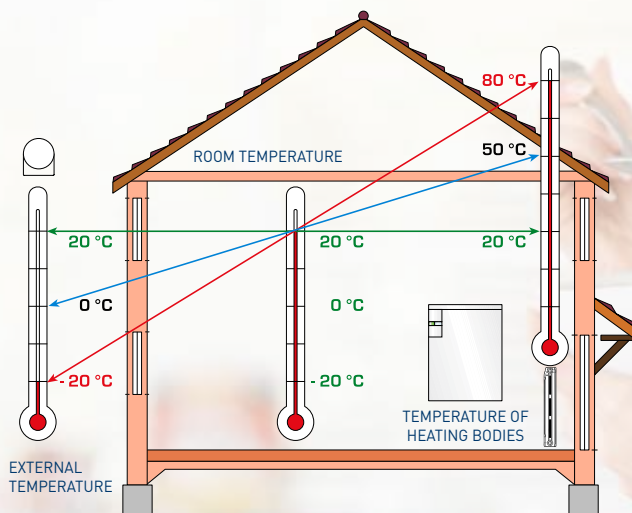
RX E is equipped with a control panel that characterizes the look of the boiler, consisting in two separate areas one for the user and one for the installer. Underneath the lower hatch, there is an 8-button keypad allowing intuitive control by the user. Above the LCD display, the hatch hides an area reserved to installers/technicians, characterised by four buttons and a PC data connection port, in addition to a space for the eventual installation of a timer.

- A** INSTALLER INTERFACE
- B** BACKLIT DISPLAY SHOWING ALL THE MOST IMPORTANT INFORMATION
- C** USER INTERFACE
- D** LED STATUS INDICATOR
BLUE: IN OPERATION - RED: IN ALARM

RX E

An expandable system

All boilers in the range allow climate regulation thanks to an external sensor supplied standard and help to reduce heating system operating costs. Two different thermostats can be connected to manage two circuits with differentiated temperatures. All boilers are designed to allow combination with a solar thermal system. Using the InSOL kit, the boiler can manage a forced circulation solar system.



RX CE IONO - RX TP

Simple to use

With just one switch, the boiler automatically controls all the operating phases and stable running: just turn the switch and the boiler will automatically start when heating is required. Temperature is regulated by the thermostat knob, with a regulation range between 45 and 85°C. To ensure maximum safety, the commands are protected by a flap against accidental tampering.

List of operation/tools

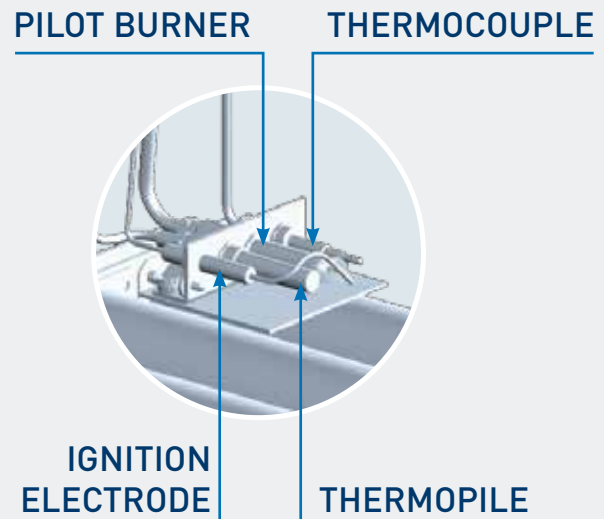
- 1 Main switch
- 2 Lock out button
- 3 Smoke thermostat
- 4 Hydrometer
- 5 Thermometer
- 6 Safety thermostat
- 7 Boiler thermostat



TP version - non electric

The RX TP versions do not require connection to the mains as they are self-powered. They are equipped with a gas valve / thermopile / permanent pilot burner feeding on their own.

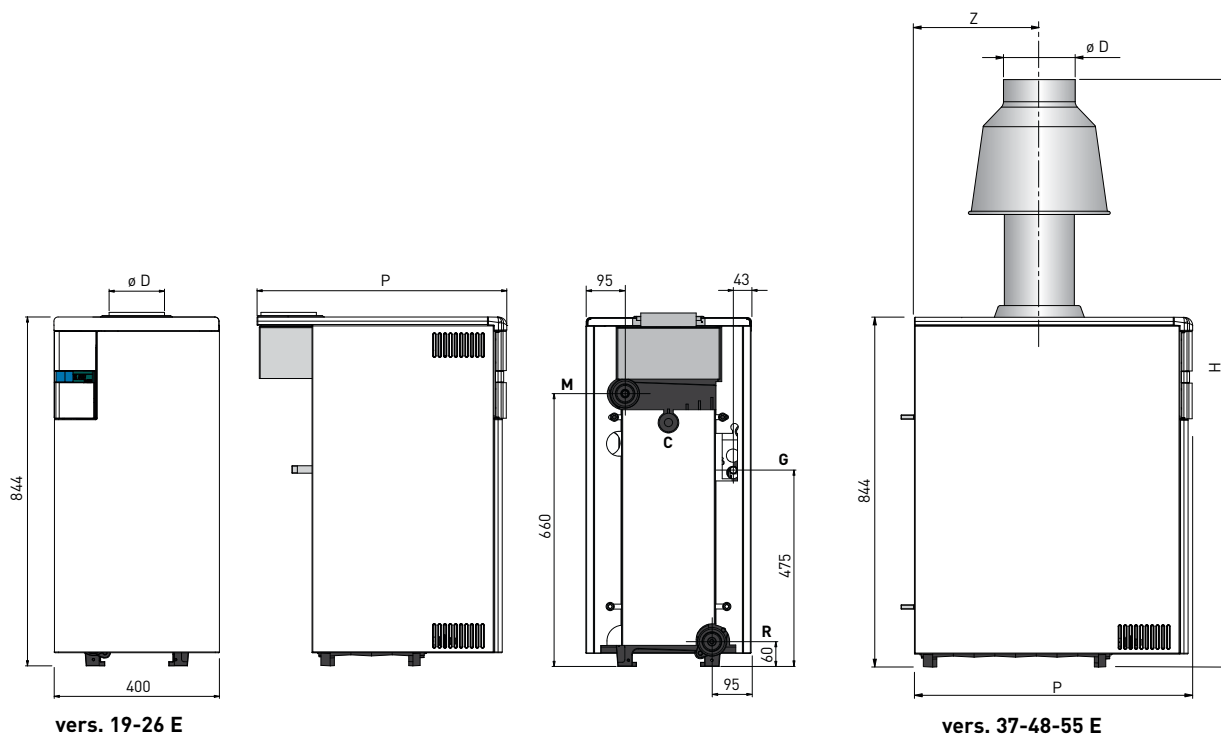
The thermocouple and thermopile properly heated generate sufficient current for the operation of the pilot burner and the gas valve.



RX E

TECHNICAL DATA

| MODEL | | RX 19 E | RX 26 E | RX 37 E | RX 48 E | RX 55 E |
|--|------|-----------|-----------|-----------|-----------|-----------|
| Nominal heat output | kW | 22,4 | 30,5 | 39,8 | 48,8 | 60,7 |
| Minimum heat output | kW | 14,6 | 20,5 | 25,8 | 31,6 | 41,0 |
| Nominal heat input | kW | 25,0 | 34,8 | 44,8 | 55,0 | 69,2 |
| Minimum heat Input | | 16,3 | 22,4 | 29,3 | 36,0 | 46,0 |
| Efficiency rating at maximum output | % | 88,0 | 87,6 | 87,3 | 88,7 | 87,7 |
| Efficiency rating at 30% of maximum output | % | 84,5 | 84,8 | 85,2 | 85,4 | 85,8 |
| NOx emission class | | 2 | 3 | 2 | 2 | 2 |
| Cast iron sections | n° | 3 | 4 | 5 | 6 | 7 |
| Water content | l | 10 | 13 | 16 | 19 | 22 |
| Absorbed power consumption | W | 18 | 18 | 18 | 18 | 16 |
| Protection grade | IP | 20 | 20 | 20 | 20 | 20 |
| C.H. setting range | °C | 45÷85 | 45÷85 | 45÷85 | 45÷85 | 45÷85 |
| Maximum working pressure | bar | 4 | 4 | 4 | 4 | 4 |
| Maximum working temperature | °C | 85 | 85 | 85 | 85 | 85 |
| Min/Max smokes temperature | °C | 114/129 | 116/133 | 102/123 | 116/142 | 131/154 |
| Min/Max smokes flow | gr/s | 22,8/23,5 | 34,3/40,6 | 40,9/44,8 | 50,2/51,3 | 51,1/59,0 |
| Weight | kg | 101 | 126 | 150 | 176 | 202 |



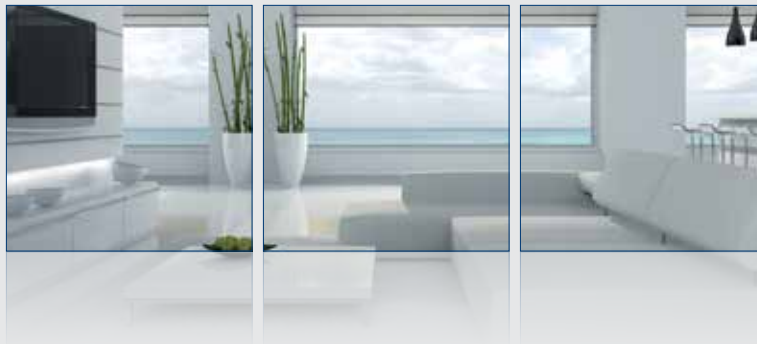
vers. 19-26 E

vers. 37-48-55 E

| Dimensions | | 19 E | 26 E | 37 E | 48 E | 55 E |
|------------|----|------|------|------|------|------|
| ø D | mm | 130 | 150 | 180 | 180 | 200 |
| P | mm | 605 | 730 | 670 | 770 | 870 |
| H | mm | - | - | 1435 | 1435 | 1675 |
| Z | mm | - | - | 245 | 295 | 345 |

| Hydraulic connections | | 19 E | 26 E | 37 E | 48 E | 55 E |
|-----------------------|----------------|--------|--------|--------|--------|--------|
| M | C.H. flow | 1 1/2" | 1 1/2" | 1 1/2" | 1 1/2" | 1 1/2" |
| R | C.H. return | 1 1/2" | 1 1/2" | 1 1/4" | 1 1/4" | 1 1/4" |
| G | Gas connection | 1/2" | 1/2" | 1/2" | 1/2" | 3/4" |
| C | Filling system | 1/2" | 1/2" | 1/2" | 1/2" | 1/2" |

Fonderie SIME S.p.A. reserves the right to modify its products in order to improve them without compromising their essential features, at any time and without prior warning. Therefore, this prospectus does not constitute a contract with third parties. cod. 3902102B - 02.2016 [1]



Fonderie Sime. S.p.A has obtained voluntary certifications ISO 14001 and OHSAS 18001, constituting international recognition of the commitment and responsibility assumed by Sime on matters of the environment and worker safety. Through the successful achievement of this objective, Sime has materialised its corporate mission, while undertaking to continuously improve its current activities and future processes.



Fonderie Sime S.p.A. - Via Garbo, 27 - 37045 Legnago (VR) Italy - Tel. +39 0442 631111 - Fax +39 0442 631291